



Water Quality Monitoring Report

- Bacterial Monitoring Program -

The Rivanna Conservation Alliance monitors 14 sites throughout the watershed, including 10 of the 14 locations within the City of Charlottesville.

During the April sampling all fourteen sampling locations met acceptable EPA bacterial pathogenic limits. During May, one location, Rivanna River - Riverview Park showed elevated sampling of 367 CFU/100ml. For June, eight sampling locations registered above acceptable EPA bacterial pathogenic limits. Please see the below data table and map for these locations.

Please check the RCA website for monthly sampling updates. New reporting procedure going forward is that RCA will post monthly reports on its website in

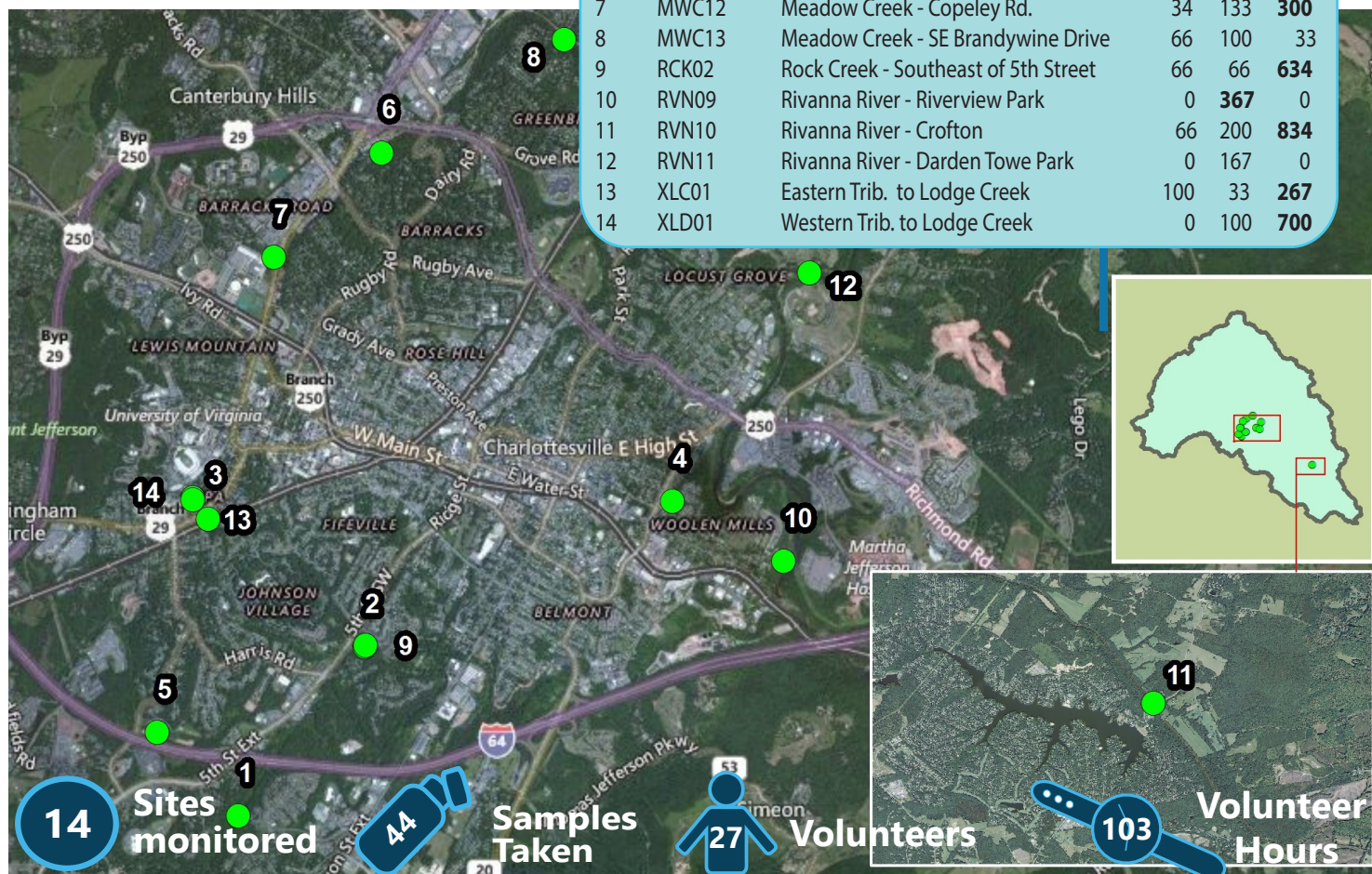
addition to quarterly rollup reports similar to this report will also be published.

The Rivanna Conservation Alliance is partnered with the James River Association to take weekly river samples from Memorial Day to Labor Day at two sites on the Rivanna River. Results from these samples will be made available on the RCA and JRA websites to inform the public of high fecal coliform bacteria levels in the watershed. Monthly bacterial sampling data:

<http://www.rivannariver.org/bacteria/>



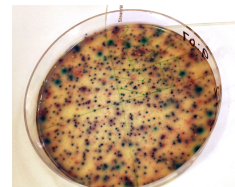
Id	Site	Name	Results in (e.coli CFU/100ml)	April	May	June
1	BSC01	Biscuit Run		34	66	143
2	LDC01	Lodge Creek - Southeast of 5th St.		33	34	400
3	LDC03	Lodge Creek - S of Jefferson Park Ave.		34	66	600
4	MDC01	Meade Creek - Meade Park		133	234	0
5	MSV05	Moore's Creek Upper - Azalea Park		34	0	267
6	MWC11	Meadow Creek - Meadowbrook Gardens		0	33	167
7	MWC12	Meadow Creek - Copeley Rd.		34	133	300
8	MWC13	Meadow Creek - SE Brandywine Drive		66	100	33
9	RCK02	Rock Creek - Southeast of 5th Street		66	66	634
10	RVN09	Rivanna River - Riverview Park		0	367	0
11	RVN10	Rivanna River - Crofton		66	200	834
12	RVN11	Rivanna River - Darden Towe Park		0	167	0
13	XLC01	Eastern Trib. to Lodge Creek		100	33	267
14	XLD01	Western Trib. to Lodge Creek		0	100	700



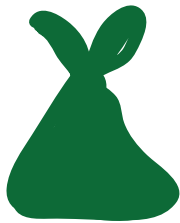
How much bacteria is too much?

Bacteria exists all around us, and most types are not harmful to you or your pet. But there are a few kinds of water-borne bacteria that when encountered by human beings in high volumes can cause severe sickness. Many of these pathogenic (disease causing) bacteria are transferred through waste of warm-bodied animals and make it into our waterways by being swept into creeks after a storm. Tests for these pathogens are expensive and time consuming, so most often water monitors look for indicator bacteria called *Escherichia coli* using a quick and affordable test called Coliscan. The presence of *E. coli* in quantities more than 235 CFU/100mL (colony forming units/100 milliliters) means there likely is contamination by fecal waste with a 1-in-28 risk of becoming ill. This standard, set by the Environmental Protection Agency, is based on how much water one might accidentally consume or come into contact with when swimming.

To learn more about water safety in Virginia visit:
<http://www.vdh.virginia.gov/epidemiology/DEE/Waterborne>



What can you do to reduce bacteria in our streams?



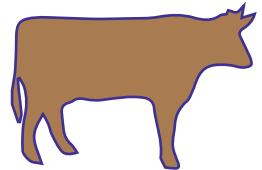
**Pick up after
your pet**



**Maintain your
septic system**



**Report illicit
discharges to RCA**



**Reduce animal
time in streams**

Volunteers

Amanda Demmerle, Ami Riscassi, Andi Clinton, Beth Kuhn, Deana Sackett, Donna Shaunesey, Eileen Stephens, Elizabeth Sidamon-Eristoff, Emily Kuhn, Evie Sackett, Jill Greiner, Jill Zimmerman, John Edelen, Karen Siegrist, Kristina Reid-Black, Laura Troy, Liz Sidamon-Eristoff, Marilyn Koleszar, Max Redmond, Neil Means, Patricia Burkett, Se Jong, Sydney Blair, Vicki Metcalf, Victoria Young, Wendy Roberman, Zona Chalifoux

Thank You!

Community Partners

Albemarle County, City of Charlottesville, Fluvanna County, Rivanna River Basin Commission, Thomas Jefferson Planning District Commission, Rivanna Water & Sewer Authority, The Nature Conservancy, Thomas Jefferson Soil & Water Conservation District

Science Advisory Board

Anne Allison, Mike Foreman, John Murphy, Brian Richter, Ami Riscassi, Todd Scanlon, Jeff Sitler, Billy VanWart, Robbi Savage

**108 5th Street Suite 209
Charlottesville, VA 22902**



**Phone: 434-977-4837
<http://www.rivannariver.org/>**