



RIVANNA RIVER STEWARD REPORT

River Stewards: Justin Altice **Date:** 05-14-17

Starting Location and Time: Darden Towe Park (5:00 PM)

Ending Location and Time: Riverview Park (6:00 PM)

Weather: Sunny Sky, a few clouds **Recent Precipitation:** Much precipitation in proceeding week lead to high water levels for this stretch

USGS Gauges: Earlysville 2.8 ft (300 ft² / sec), Palmyra 5.6 ft (2000 ft² / sec)

Water Color: Really Murky **Water Odor:** None **Air Temp:** 83° F

DO: 4 ppm **PH:** 8 **Turbidity:** 70 JTU **Water Temp:** 63° C

Water Testing Location: Riverview Park

Land Use:

This stretch of the River runs through the urban ring of Albemarle County and the City of Charlottesville; the Old Mills Trail (County) and the Rivanna Trail (City) run alongside of the Rivanna on this stretch. A few apartment and condo complexes are located nearby. The Rivanna crosses underneath Free Bridge along the Route 250 bypass.

Wildlife Sightings and Plant Life:

Turtles, Chickadee, Bats, Hawk, Geese, Ducks, Butterflies, thick bamboo along City side of the River just beyond Darden Towe Park access.

People Interactions:

Many people were at both parks, Darden and Riverview, on the Sunday of the paddle. Did not see anyone on the River as the water levels were a bit high for novice users.

Litter and Pollution:

Collected 1/3 bag of trash, most comprised of plastic and glass bottles.

Overall Summary:

Excellent early evening paddle as the Sun only covered one side of the River at this time of day, so both shade and sun could be enjoyed. Water levels were high due to recent participation; this particular section was at a perfect level for most rock obstacles usually present to be completely submerged leaving an unimpeded river surface. The level also gave a good



current to the River making for a paddling optional, mostly just steering experience. The one rapid on this stretch which is normally pretty tame was noticeable more active and exciting. The access point at Darden Towe park had a lot of noticeable sedimentation from recent high river levels. The access project undertaken by RCA, RRC, and the City held up really well after being completely submerged during the recent high river levels, which was good to see.

Actions Needed – level of priority (1 highest/5 lowest):

2 – Work to clear debris built up on Free Bridge from recent high river levels (see picture below).



Figure 1: Sedimentation on Darden access ramp.



Figure 2: High water levels at Darden.



Figure 3: Thick bamboo along City side of River.

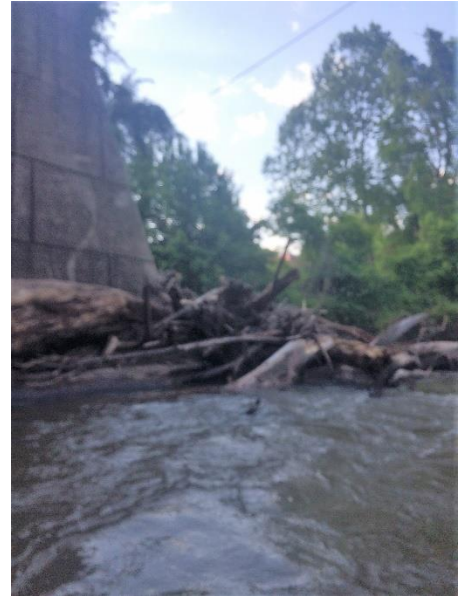


Figure 4: Debris caught on Free Bridge.



Figure 5: Early evening paddle, half sun, half shade.



Figure 6: Riverview access project still intact!!



Figure 7: Trash collected during paddle.