



# RIVANNA RIVER STEWARD REPORT

**River Stewards:** Justin Altice

**Date:** 6/21/19

**Starting Location and Time:** Riverview Park (11:30 PM)

**Ending Location and Time:** Milton Landing (2:00 PM)

**Weather:** Mostly Clear Skies **Recent Precipitation:** Dwindling rain in the weeks prior

**USGS Gauges:** Palmyra 3.2 ft (400 ft<sup>2</sup> / sec)

**Water Color:** Mostly Clear **Water Odor:** Nothing of note

**Air Temp:** 85° F **Nitrogen:** 0

**DO:** 4 ppm **PH:** 8 **Turbidity:** 10 JTU **Water Temp:** 78° F

**Water Testing Location:** North Milton Bridge Over Rivanna River

---

## Land Use:

A few houses after Riverview Park on the City side then the old Woolen Mills site soon to be redeveloped; River runs underneath I-64 overpass and railroad; mostly wooded the rest of the way with a few open fields. Several utility lines cross the River and the Railroad parallels much of the way.

## Wildlife Sightings and Plant Life:

Eagle, Osprey, Kingfishers, Frogs, Turtles, and Blue Herron. Many blooming Mimosa Plants.

## People Interactions:

Met two young children enjoying the RCA implemented boat access point at Riverview Park. Three women were exiting the Rivanna River after riding tubes from Darden Towe Park to Riverview. Met a large group of paddlers who rented equipment from the Rivanna River Company and aided some of them through the rapids along this stretch of the River. A group of three men were wading through the River fishing near the Milton access point.

## Litter and Pollution:

Removed 3 large trash bag full of plastics, cans, Styrofoam and debris that was mostly concentrated in stagnant, strainer side areas of the River.



### **Overall Summary:**

The weather was wonderful for a paddle on the Rivanna; the lack of recent rains put the water levels at just about the minimum level before being too low starts to become an issue. It was pleasing to see so many community members accessing the River from the Riverview Park access point that RCA helped implement improvements to a few years back and that have held up surprisingly well over time.

A group of paddlers who rented equipment from the Rivanna River Company (RRC) were encountered which shows the positive impact of their business on getting community members to experience the Rivanna firsthand. Efforts were directed toward some of these folks to help them navigate the rapids on this section of the River. This section is the most active with rapids (class II at most) along the Rivanna and can be intimidating for unexperienced paddlers.

There was a large amount of trash that was removed from the River during the paddle which was largely collected at 3-4 central spots along the route where a strainer and stagnant water movement caused trash to collect there. The Milton access point where the paddle ended has a trash barrel in place that Albemarle County maintains.

### **Actions Needed – level of priority (1 highest/5 lowest):**

3 – Erosion of bank near Riverview Park Access point starting to erode, need to develop a plan to mitigate if possible, 5-A few buried tires identified along the paddle route that would warrant removal in the future, 5-Possible work with RRC to develop a best practices/routes tutorial for navigating the rocky rapid on this section of the Rivanna (can be difficult as varying water levels change what the best practices/route might be), 2 – Strainer located .25 miles from 64 over pass bridge needs to be removed



Figure 1: Blue Heron taking flight.



Figure 2: Blooming River flora.



Figure 3: Blue skies over Rivanna River.

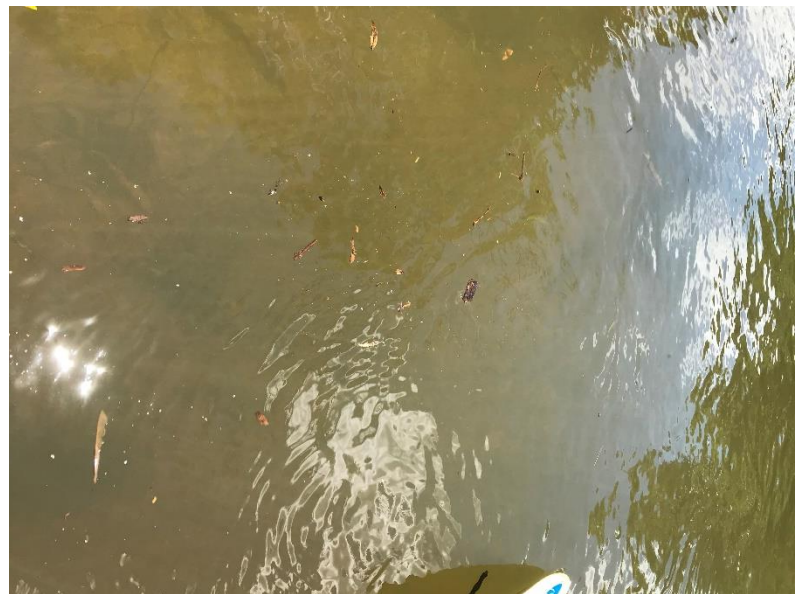


Figure 4: Example of low turbidity.





Figure 5: Trash collecting in stagnant pool.



Figure 6: Strainer to be addressed on River.



Figure 7: Turtle diving into River.



Figure 8: And here is a coconut!!?!.





Figure 9: Large blooming Mimosa tree.



Figure 10: Large paddling group encountered.



Figure 11: Distant Eagle flying over River.



Figure 12: Example of trash removed from River.