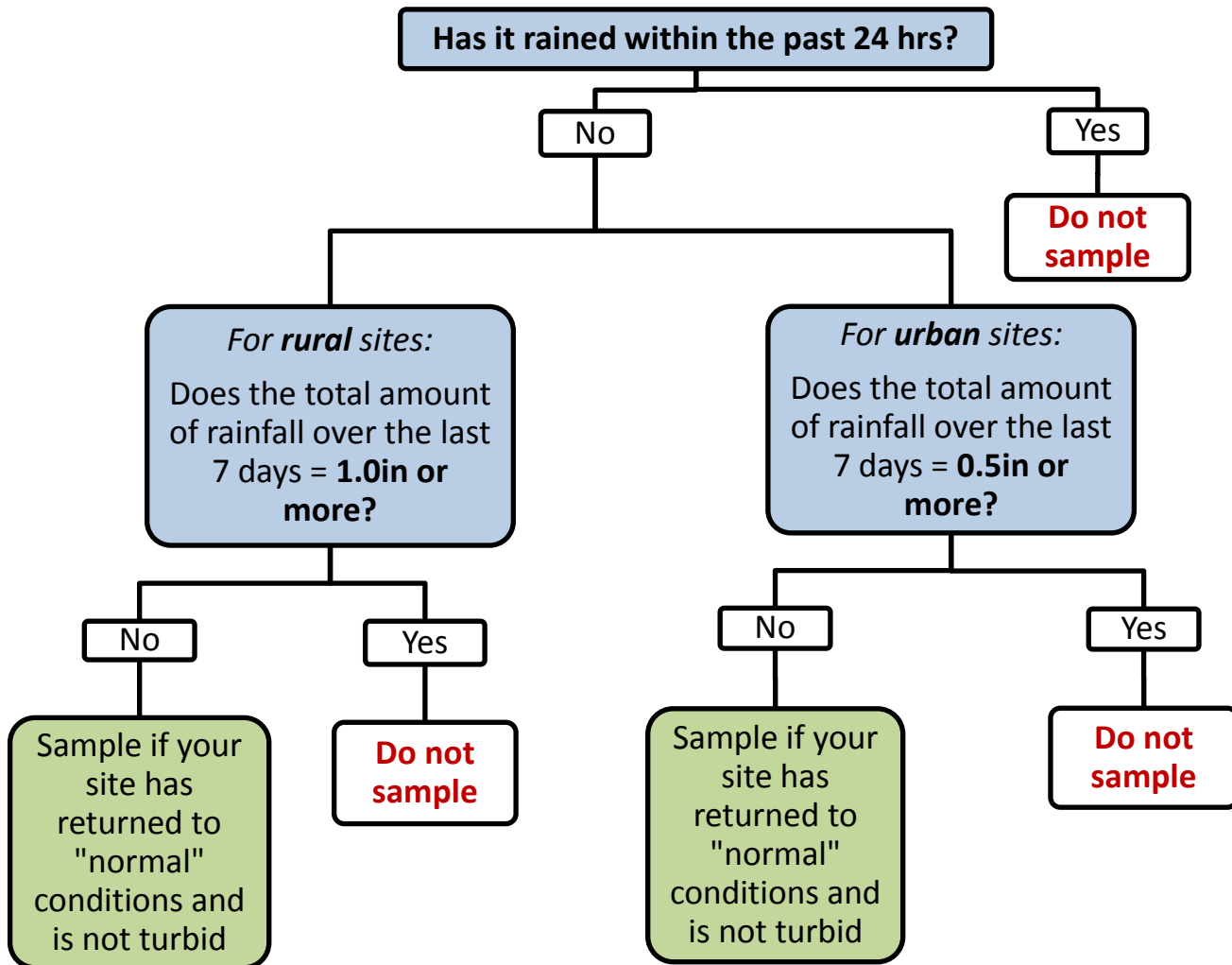


## Rain Rules

**Do not sample the day after a rain event**, and wait to collect sample(s) depending on how much rainfall has occurred.

*Use this decision tree to help you determine when to sample:*



\*Refer to the local weather stations on the next page to look up previous rainfall amounts, and to help determine when to sample. *You will need to record previous rainfall data on field datasheets.*

The local USGS flow gages can also help you determine when to sample. The following links are more helpful for the sites stationed on these rivers, but they can provide a bit of help for the small streams, too. Scroll down to "Discharge, Cubic Feet Per Second." Ideally, the flow should be close to the median daily statistic (the small triangles on the graph). After looking at the graph, if you're still not sure what to do, email: [rachelpence@rivannariver.org](mailto:rachelpence@rivannariver.org)

1. **Mechums River:** [http://waterdata.usgs.gov/va/nwis/uv/?site\\_no=02031000&PARAMeter\\_cd=00065.00060](http://waterdata.usgs.gov/va/nwis/uv/?site_no=02031000&PARAMeter_cd=00065.00060)
2. **Moormans River:** [http://waterdata.usgs.gov/va/nwis/uv/?site\\_no=02032250&PARAMeter\\_cd=00065.00060.62620.00062](http://waterdata.usgs.gov/va/nwis/uv/?site_no=02032250&PARAMeter_cd=00065.00060.62620.00062)
3. **North Fork Rivanna:** [http://waterdata.usgs.gov/va/nwis/uv/?site\\_no=02032640&PARAMeter\\_cd=00065.00060.00062](http://waterdata.usgs.gov/va/nwis/uv/?site_no=02032640&PARAMeter_cd=00065.00060.00062)
4. **South Fork Rivanna:** [https://waterdata.usgs.gov/va/nwis/uv/?site\\_no=02032515&PARAMeter\\_cd=00065.00060.62620.62614](https://waterdata.usgs.gov/va/nwis/uv/?site_no=02032515&PARAMeter_cd=00065.00060.62620.62614)
5. **Rivanna @ Palmyra:** [http://waterdata.usgs.gov/va/nwis/uv/?site\\_no=02034000&PARAMeter\\_cd=00065.00060](http://waterdata.usgs.gov/va/nwis/uv/?site_no=02034000&PARAMeter_cd=00065.00060)

## Local Weather Stations

Refer to stations that are close to your monitoring site, and record previous rainfall on your datasheet.

The links will take you to the 'dashboard' page for each station:

1. Scroll down to "Weather History and select 'Monthly Mode' from the drop down menu.
2. Select the Table view to record previous rainfall on the datasheet.

Site Code	Site Name	Weather Station Name	Weather Station Link
SDV04	Stanardsville Run upstream from N. Ridge Way	Quarter Creek: <b>KVARUCKE23</b>	<a href="https://www.wunderground.com/dashboard/pws/KVARUCKE23">https://www.wunderground.com/dashboard/pws/KVARUCKE23</a>
PKR01	Parker Branch @ 633		
RCH01	Roach/Buffalo River n of 648		
QTR03	Quarter Creek in Twin Lakes		
LCH01	Lynch River @ 603		
PRD01	Predy Creek west of Rosewood Drive	Predy Creek: <b>KVARUCKE6</b>	<a href="https://www.wunderground.com/dashboard/pws/KVARUCKE6">https://www.wunderground.com/dashboard/pws/KVARUCKE6</a>
BRN01	Burnley Branch @ Burnley Station Rd		
SFR01	Swift Run @ 605		
MSH01	Marsh Run upstream of 641		
RRN06	North Fork @ Advance Mills		
RVN31	South Fork @ Forks of Rivanna	Rivanna: <b>KVACHARL195</b>	<a href="https://www.wunderground.com/dashboard/pws/KVACHARL195">https://www.wunderground.com/dashboard/pws/KVACHARL195</a>
RRN07	North Fork @ Forks of Rivanna		
BKU03	Buck Mountain Creek upper w of 666-A	Free Union: <b>KVAFREEU5</b>	<a href="https://www.wunderground.com/dashboard/pws/KVAFREEU5">https://www.wunderground.com/dashboard/pws/KVAFREEU5</a>
BKM01	Buck Mountain Creek @ 665 – A		
MRN03	Moormans River @ 601		
MCM04	Mechums River @ 601		
FSH03	Fishing Creek w of Willwood Dr – B		
NDK12	Naked Creek @ 844 – B		
XYP01	Alb Co Reference Stream A		
DOU02	Doyles River upper @ Nat'l Park Boundary	White Hall: <b>KVACROZE28</b>	<a href="https://www.wunderground.com/dashboard/pws/KVACROZE28">https://www.wunderground.com/dashboard/pws/KVACROZE28</a>
DOY01	Doyles River @ 674		
MCM11	Mechums River @ 692 – B	Crozet: <b>KVACROZE32</b>	<a href="https://www.wunderground.com/dashboard/pws/KVACROZE32">https://www.wunderground.com/dashboard/pws/KVACROZE32</a>
POW02	Powells Creek ~80m above Lickinghole		
LKN01	Lickinghole Creek s of Fairwinds Ln		
STC06	Stockton Creek @ 683 – B		
IVC09	Ivy Creek in Rosemont	Ivy: <b>KVACHARL44</b>	<a href="https://www.wunderground.com/dashboard/pws/KVACHARL44">https://www.wunderground.com/dashboard/pws/KVACHARL44</a>
XLI01	Little Ivy Creek trib @ Kingston Rd		
IVC01	Ivy Creek @ 601		
MRY01	Morey Creek south of Bellair		
MWC03	Meadow Creek west of Locust Ln Ct	Woolen Mills: <b>KVACHARL134</b>	<a href="https://www.wunderground.com/dashboard/pws/KVACHARL134">https://www.wunderground.com/dashboard/pws/KVACHARL134</a>
MSC04	Moore's Creek near Woolen Mills		
RVN10	Rivanna @ Darden Towe		
RVN01	Rivanna @ Milton	Near Monticello: <b>KVACHARL224</b>	<a href="https://www.wunderground.com/dashboard/pws/KVACHARL224">https://www.wunderground.com/dashboard/pws/KVACHARL224</a>
CRL01	Carroll Creek in Glenmore		
BKI01	Buck Island Creek @ 759		
MCV01	Mechunk Creek upper @ 600	Keswick: <b>KVAKESWI5</b>	<a href="https://www.wunderground.com/dashboard/pws/KVAKESWI5">https://www.wunderground.com/dashboard/pws/KVAKESWI5</a>
MCK02	Mechunk Creek @ 759		
TKY01	Turkeysag Creek @ 22		
BVE01	Beaverdam Creek East Prong upstream of 600		
RVN10	Rivanna @ Crofton	Palmyra: <b>KVAPALMY10</b>	<a href="https://www.wunderground.com/dashboard/pws/KVAPALMY10">https://www.wunderground.com/dashboard/pws/KVAPALMY10</a>
XYX01	Lake Monticello trib emptying into Jackson Cove		
CDB01	Fluvanna County Rural Stream A		
CNM07	Cunningham Crk. Middle Fork @ Bell Farms Ln B		
CXB02	Cunningham Creek @ 15		
BAG01	Ballinger Creek @ 625		
LSD01	Long Island Creek @ 601		
RCN01	Raccoon Creek @ 15		
RVN18	Rivanna 5.2 km downstream of Palmyra		
CYC01	Carys Creek @ 15		
RVN05	Rivanna @ Rivanna Mills		